

NETHERWOOD POINTE



Visit us online

www.NetherwoodPointe.com

or call our Rental Office

908-707-1007

**Netherwood Pointe
920 South Avenue
Plainfield, NJ 07060**

**908-707-1007
908-707-1335 (fax)**



Information herein subject to any errors or omissions. All dimensions and elevations are approximate and subject to variations. Please consult property management for details.



Included Features

- Individually controlled central air conditioning & heating systems
- Sewer and Water usage included
- Gourmet Kitchens with high quality appliances
- Washer and Dryer
- Spacious Living Room, Dining Room, and Bedrooms
- Townhome or Flat unit types with up to 2.5 bathrooms
- Private Covered Parking
- Private Patio or Balcony
- Private Entry into all units
- Private In-Unit Storage Area
- Wall to Wall Carpet
- Designer Bathrooms with extra large Master Bathroom shower
- Ceramic Tile in Kitchen and Bathrooms
- Charming Victorian architecture
- 1-minute to Netherwood Train Station

★ NETHERWOOD
★ POINTE ★

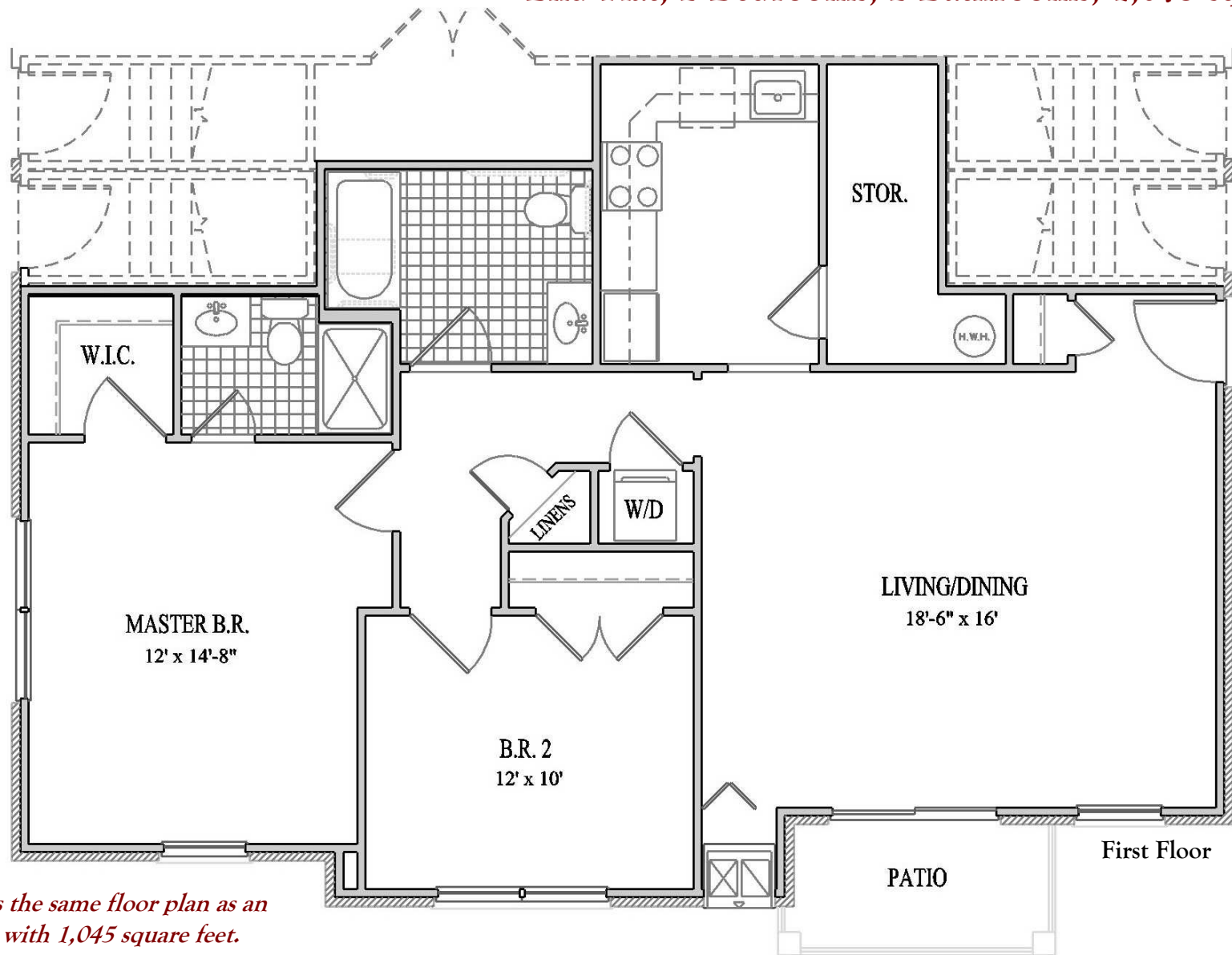
Neighborhood Map



NETHERWOOD POINTE

The Corby Elite

End Flat, 2 Bedrooms, 2 Bathrooms, 1,075 square feet



The Corby is the same floor plan as an Interior Flat with 1,045 square feet.

Information herein subject to any errors or omissions. All dimensions and elevations are approximate and subject to variations. Please consult property management for details.

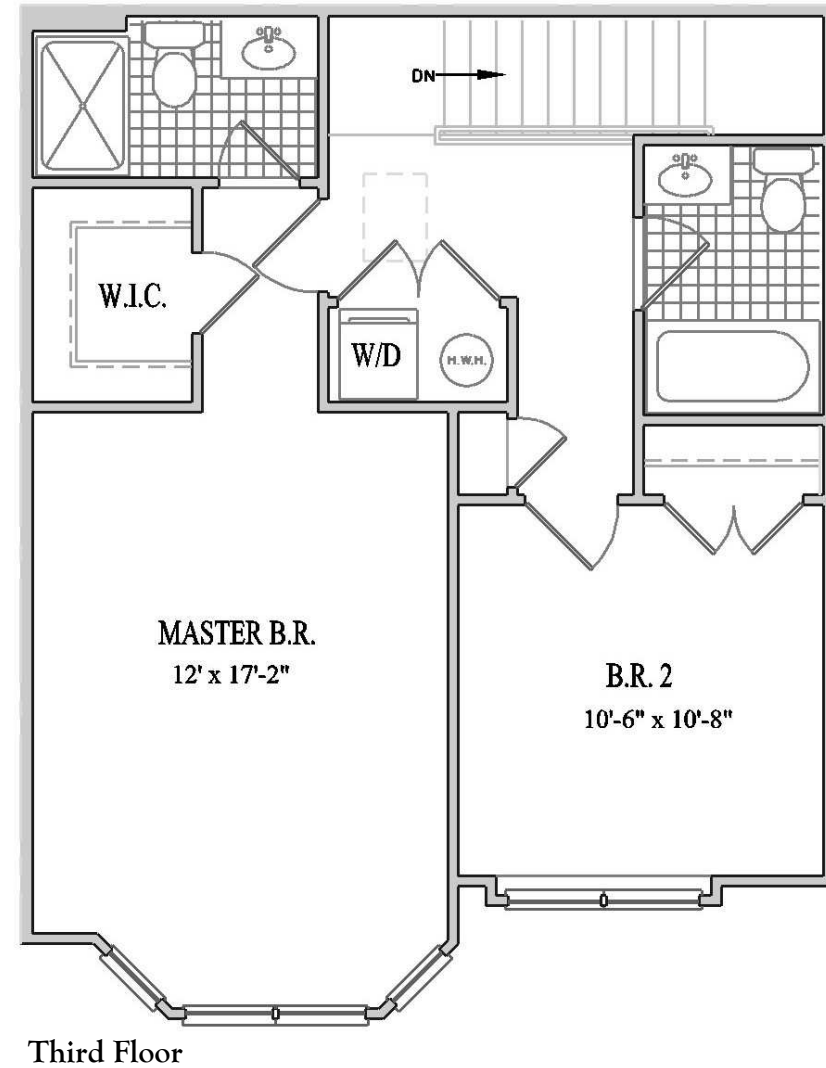
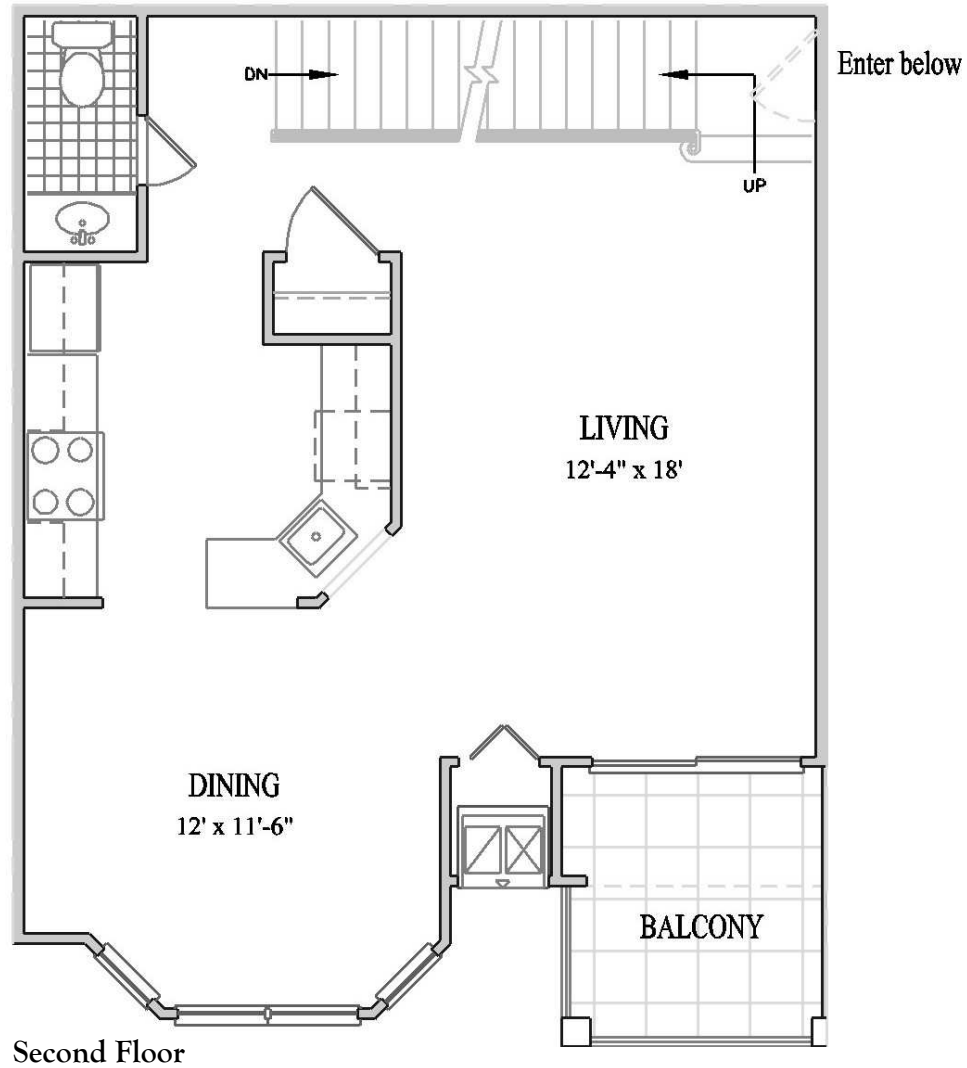


ADAPTABLE

NETHERWOOD POINTE

The Denbury

Interior Townhome, 2 Bedrooms, 2.5 Bathrooms, 1,190 square feet

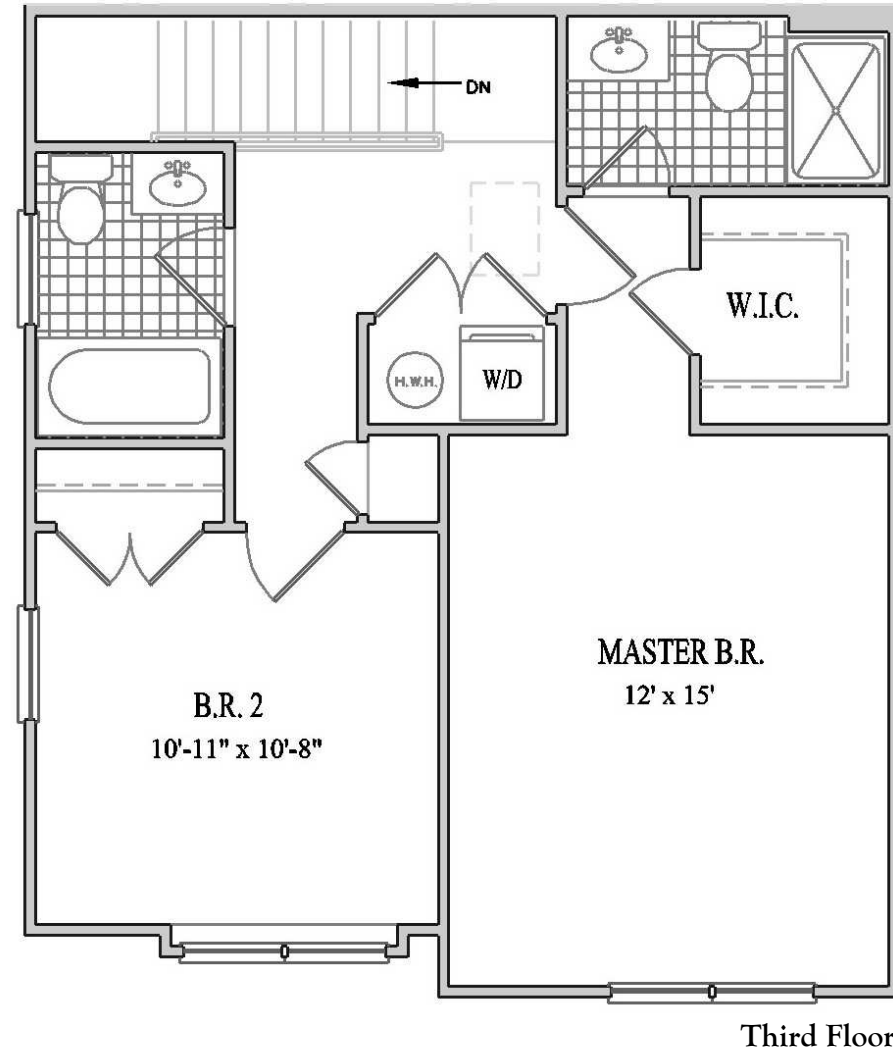
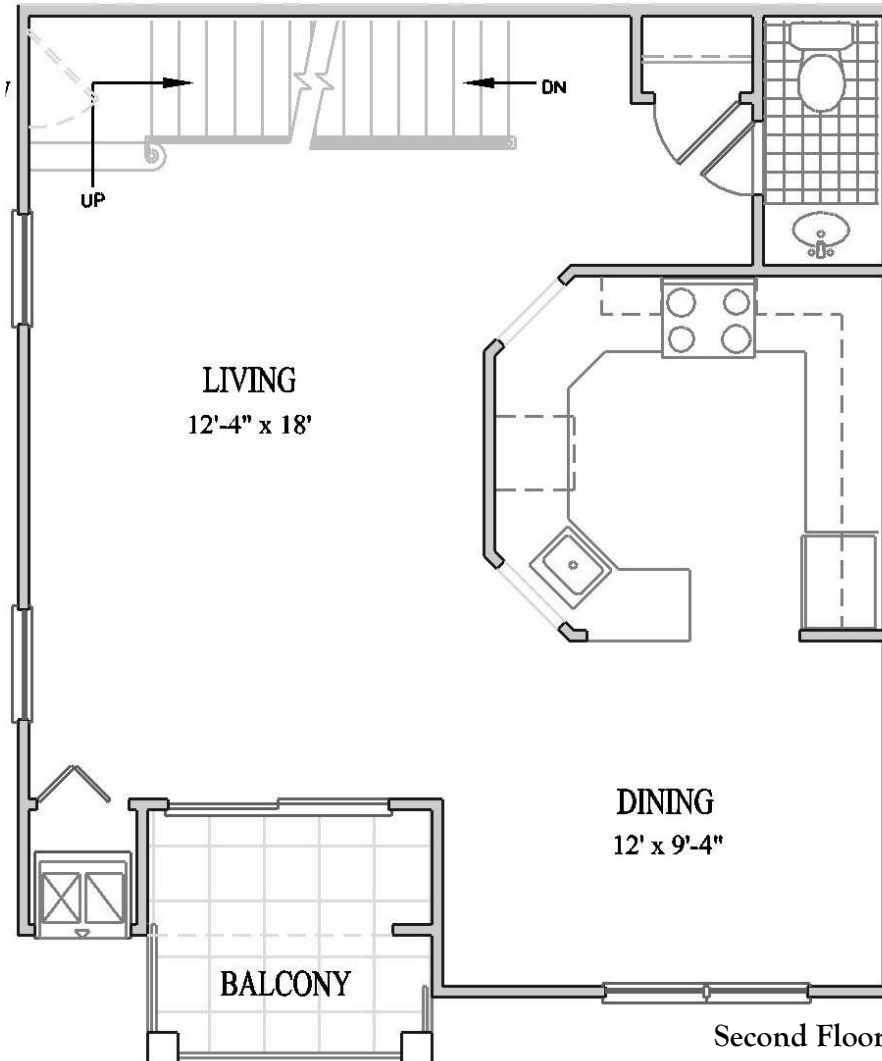


NETHERWOOD POINTE

The Denbury Elite

End Townhome, 2 Bedrooms, 2.5 Bathrooms, 1,170 square feet

Enter below



NETHERWOOD POINTE

Community Layout

